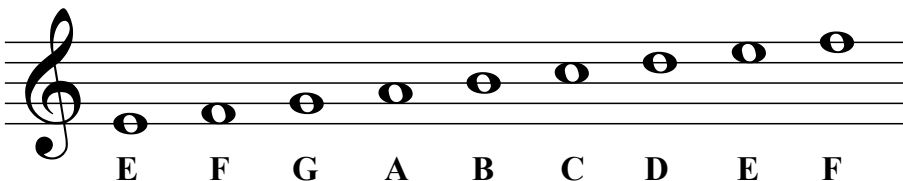


# The Staff and notes on the Treble Clef

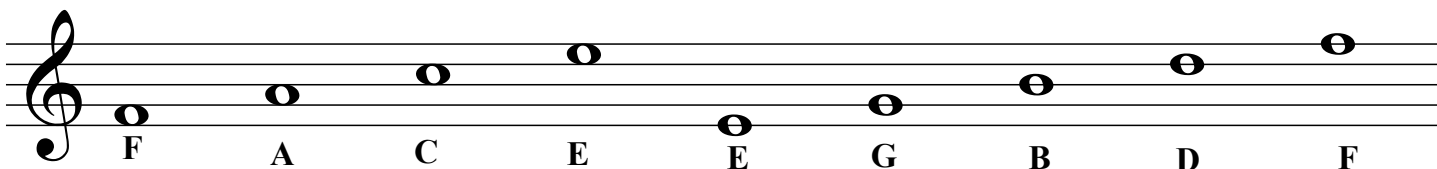
A **clef** appears at the beginning of each staff. The clef shown here is a **treble clef**.



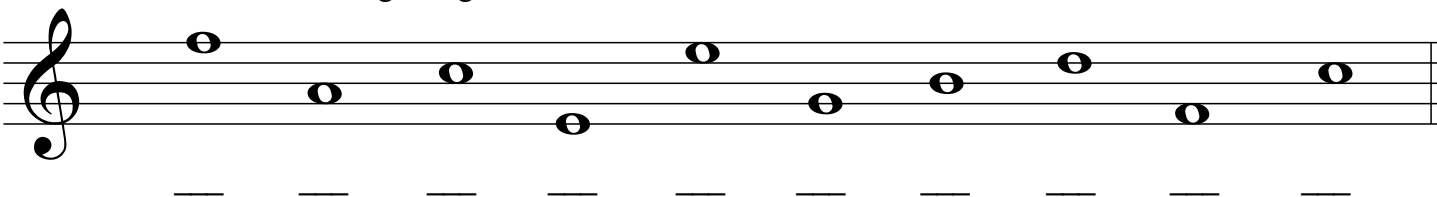
Each note on the treble clef staff has a letter name.



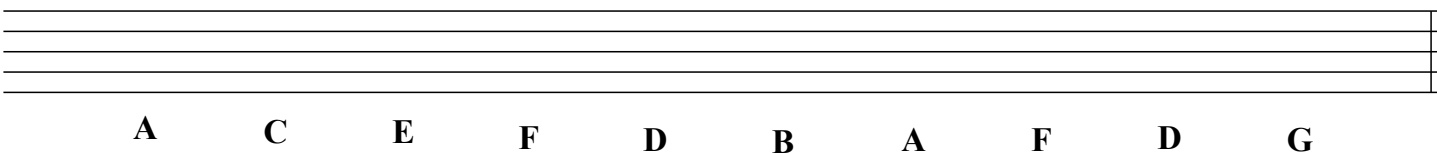
1. Notes in the spaces spell the word **FACE**. Use the acrostic **Every Good Boy Does Fine** for notes on the lines.



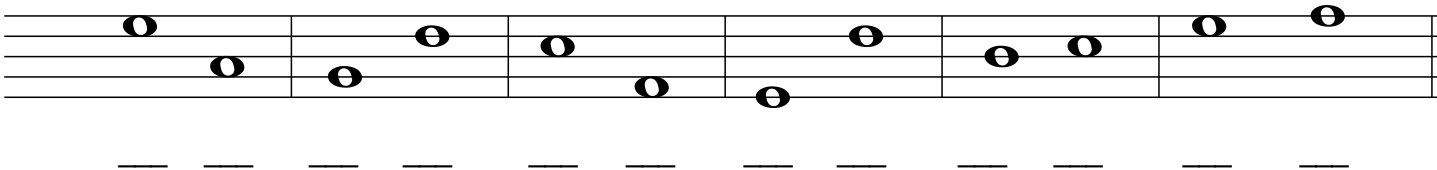
2. Draw a treble clef at the beginning of the staff and write the letter name of each note.



3. Practice drawing the treble clef on the next three systems. Write in the notes above the letter names on the staff below. When possible, only use a note one time.



4. Write the letter name for each note, then circle the higher note in each pair.



5. Write the letter name for each note, then circle the lower note in each pair.

